

MA PROCESSING DEADLINES

Processing Timeframes

APPLICATIONS: For initial applications, benefits must be issued before 45 calendar days from the application date.

DISABILITY DETERMINATION: For an application that requires a disability determination, benefits must be issued before 90 calendar days from the application date.

RENEWAL: Must be received by the end of the renewal due month. If the renewal is not returned, CBMS will terminate the case and coverage will end.

NEW APPLICATION: Members may have to provide a new application if they have not provided the required documents.

RRR Processing Checklist

Did you allow time to?

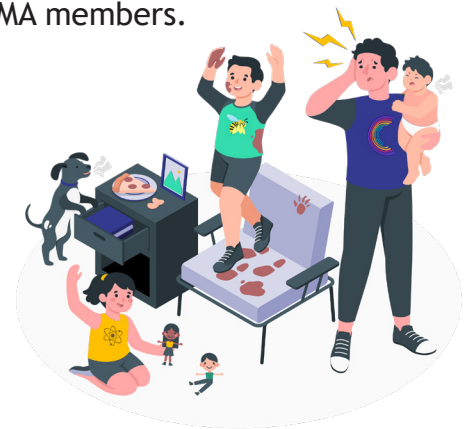
- | | |
|---|---|
| ✓ | Request Verifications? Members must be given 10+1 days for VCLs. Make sure to always review if information can be verified via Collateral Contact, Interface, or Work Number. |
| ✓ | Act on verifications received. Make sure to review if information has been submitted. |
| ✓ | Process case in Interactive Interview. |

NOTE: Medical Assistance will close for missed verification 5 days after the VCL due date.

Refer to MA Rescind or Reapply WBT for more information on closed MA members.

Example

Sean returned his family's RRR for Medical Assistance (MA) after the certification period expired. MA will close for missed verification five days after the VCL due date.



Accessibility

This document is designed to comply with the Web Content Accessibility Guidelines (WCAG) 2.1 AA standard. If you experience any difficulty accessing the content or have questions regarding the process, please contact SOC_StaffDevelopment@state.co.us for assistance.

