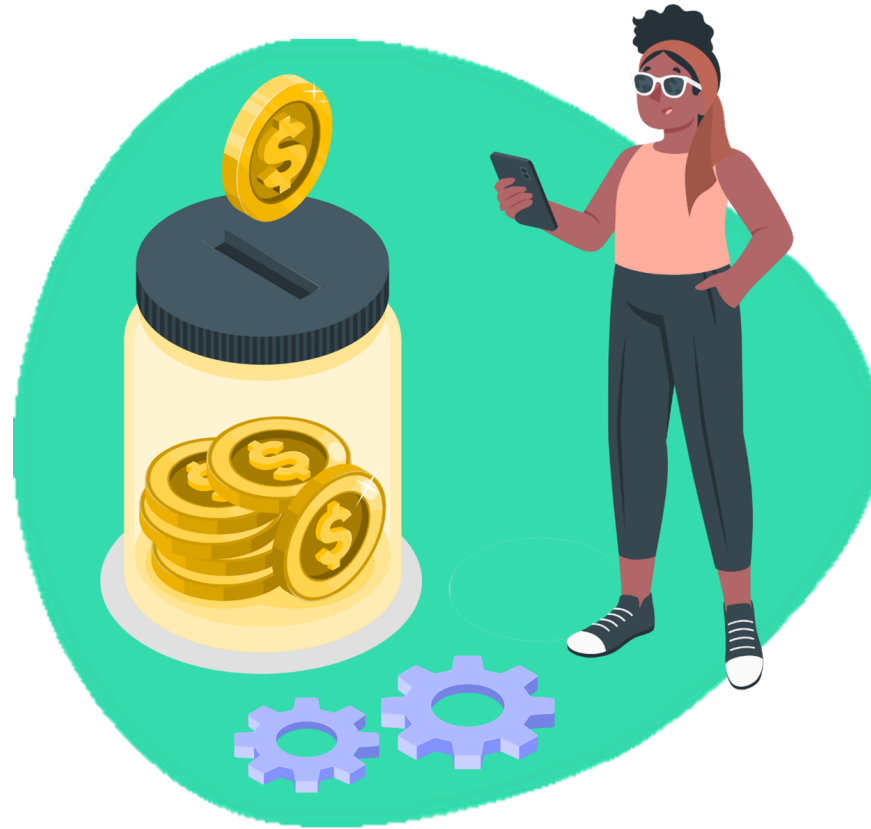


# Countable vs Exempt Income Matrix



Version 19

Release Date: December 2025



**COLORADO**  
Healthcare & Economic Security  
Staff Development Division

# Table of Contents

Click on the types of income below to be taken directly to their page.

## Earned Income

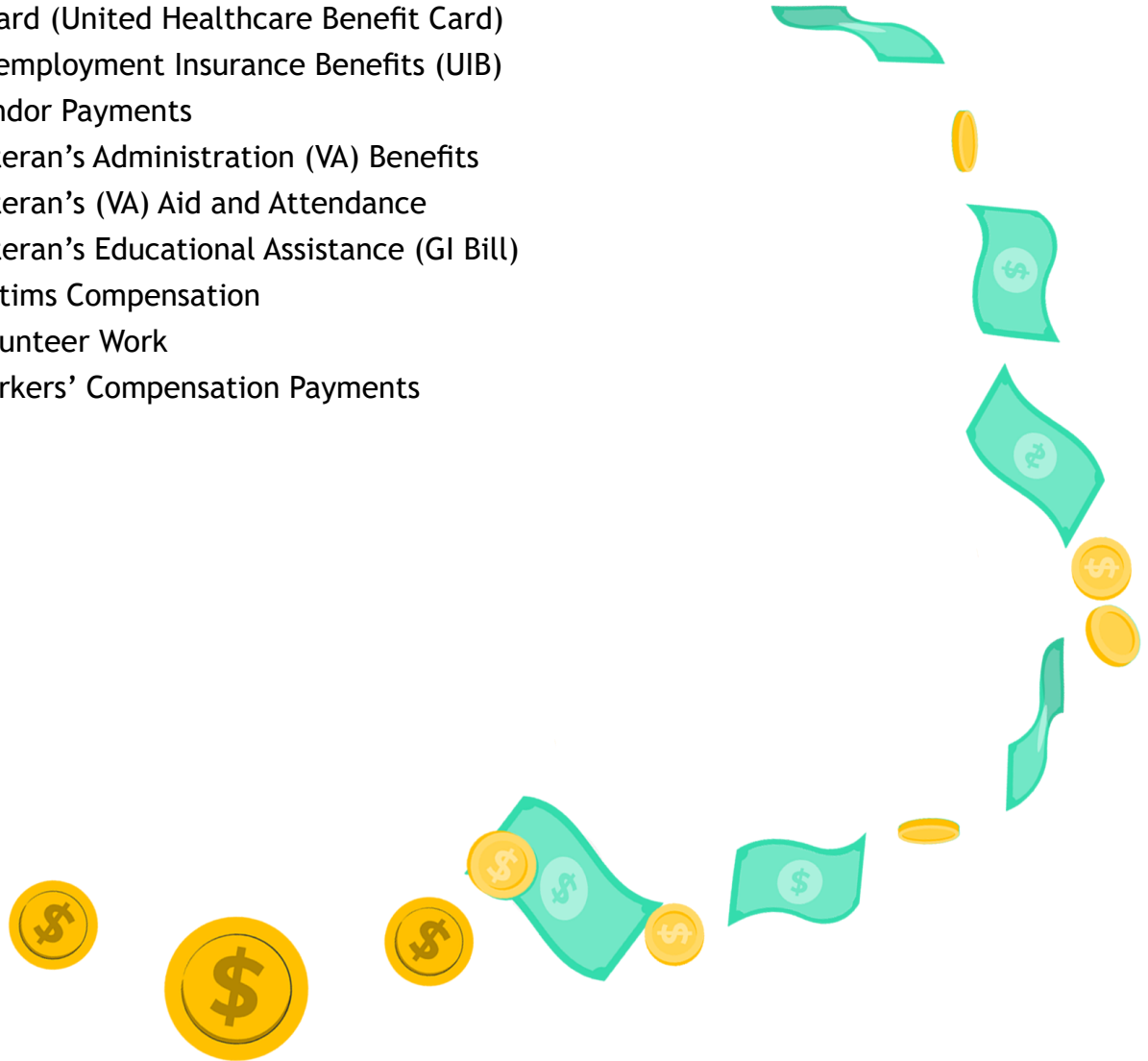
- Advances on Wages
- Americorps / Vista Wages
- Blood / Plasma Donation
- Difficulty of Care Payment (DOC) - Paid to the Individual Care Provider
- Earnings of Children Under 18
- Home Care Allowance (HCA) Individual Home Care Provider
- In-Kind - Earned
- Rental - Earned
- Room & Board (Self-Employment)
- Sick / Vacation / Bonus Pay During Employment
- Temporary (<90 Days) Income
- Title 1 (Vista - University Year of Action)
- Title V (Older Americans Act)
- Wages, Salaries, Tips
- WIOA (WIA) - Training Allowances
- WIOA (WIA) - Wages

## Unearned Income

- Adoption Subsidy (Title IV)
- Agent Orange Settlements
- Alimony and Support Payments
- Beneficiary Advisory Council (BAC)
- Certain American Indian / Alaskan Native Payments
- Child Support Arrears
- Child Support Current
- Committees and Workgroups
- Crowdfunding
- Disaster Relief Payments / FEMA
- Donated Work Hours (Not Volunteering)
- Earned Income Tax Credits
- FAMLII ( Family Medical Leave Insurance Program)
- Financial Aid: Educational Grants / Scholarships
- Financial Aid: Educational Loans
- Foster Care (Title IV)
- Garnished Wages
- Gifts
- Home Care Allowance - Payment Given to the Recipient (elderly disabled person)
- In-Kind Support Maintenance (ISM)
- In-Kind Unearned
- Income Tax Refunds
- Ineligible Members Income (Earned or Unearned)
- Inheritance
- Interest, Dividends
- Kinship Payments (Title IV)
- Kinship Payments - Non-Certified Kinship Caretaker Payments
- LEAP or Other Assistance Payments
- Life / Health Insurance Proceeds
- Loans
- Lump Sum
- Maintenance of Effort (MOE)
- Medicaid Advisory Committee (MAC)
- Military Combat Payments
- Military Education Deductions While Enlisted
- Military Salary / Allotment
- Mineral Rights Royalties or Lease Bonuses
- Minister Housing Stipend
- Monies Withdrawn from Trust Funds

# Unearned Income, Continued

- Non-Recurring Lump Sum
- PASS Income (Plan to Achieve Self Support - SSA)
- Pensions / Retirement Payments
- Prizes / Awards
- Public Assistance Payments (CW, AF)
- Railroad Retirement Annuities
- Recoupments
- Reimbursements
- Rental - Unearned
- Reverse Mortgage
- Royalties / Annuities
- Sick / Vacation / Bonus Pay After Employment Ends
- Social Security Benefits (Retirement, Survivor, Disability, and Dependent)
- Sponsor Income
- Spousal Allowance for Community Spouse
- SSI (Supplemental Security Income)
- Striker Income (Union Income)
- Student Loan Forgiveness
- Substantial Gambling / Lottery Winnings
- Income from Trusts
- UCard (United Healthcare Benefit Card)
- Unemployment Insurance Benefits (UIB)
- Vendor Payments
- Veteran's Administration (VA) Benefits
- Veteran's (VA) Aid and Attendance
- Veteran's Educational Assistance (GI Bill)
- Victims Compensation
- Volunteer Work
- Workers' Compensation Payments



## ACCESSIBILITY

This document is designed to comply with the Web Content Accessibility Guidelines (WCAG) 2.1 AA standard. If you experience difficulty accessing the content or have questions regarding the process, please contact [SOC\\_StaffDevelopment@state.co.us](mailto:SOC_StaffDevelopment@state.co.us) for assistance.

# Earned Income

## Advances on Wages

MAGI	Non-MAGI	LTC	SNAP	AF	CW
Not Specified	Not Specified	Not Specified	Countable	Not Specified	Not Specified

## Americorps / Vista Wages

MAGI	Non-MAGI	LTC	SNAP	AF	CW
Countable Be sure to address living allowance.	Exempt	Exempt	Countable If receiving prior to applying for SNAP.  Exempt If receiving SNAP prior to joining Vista.	Not Specified	Exempt

## Blood / Plasma Donation

Considered and entered as Self-Employment for all HLPGs

MAGI	Non-MAGI	LTC	SNAP	AF	CW
Countable	Countable	Countable	Countable	Countable	Countable



# Earned Income

## Difficulty of Care Payment (DOC) - Paid to the Individual Care Provider

MAGI	Non-MAGI	LTC	SNAP	AF	CW
<b>Countable</b> Payment made to the individual care provider who provides personal care to a HCBS Waiver member.  <b>Exempt</b> Care provider must reside in the same home as the HCBS Waiver member.	Countable	Countable	Countable	Countable	Countable

## Earnings of Children Under 18

MAGI	Non-MAGI	LTC	SNAP	AF	CW
<b>Exempt</b> Up to the current tax filing threshold amount for dependents and children.	<b>Exempt</b> Unless child is the applicant (AND-CS).	<b>Exempt</b> Unless child is the applicant (AND-CS).	<b>Exempt</b> Must be in school.	<b>Exempt</b> Unless child is the applicant (AND-CS).	<b>Exempt</b> Must be in school.



# Earned Income

## Home Care Allowance (HCA) - Individual Home Care Provider

HCA is a Public Assistance Benefit paid to an elderly/disabled person for the purpose of paying a home care provider. An HCA payment is not considered a Difficulty of Care (DOC) payment. This income should be entered in the Earned Income page as “home care allowance - Provider Payment”.

MAGI	Non-MAGI	LTC	SNAP	AF	CW
Countable	Countable	Countable	Not Specified	Countable	Countable

## In-Kind - Earned

Providing a service in exchange for rent, etc.

MAGI	Non-MAGI	LTC	SNAP	AF	CW
Countable	Countable Minus amount earmarked for food up to Current SSA ISM amount	Countable Minus amount earmarked for food up to Current SSA ISM amount	Exempt	Countable	Countable

## Rental - Earned

Earned = Manages property 20 hrs+ per week.

MAGI	Non-MAGI	LTC	SNAP	AF	CW
Countable	Countable	Countable	Countable	Countable	Countable

# Earned Income

## Room & Board (Self-Employment)

MAGI	Non-MAGI	LTC	SNAP	AF	CW
Countable	Countable	Countable	Countable	Countable	Countable

## Sick / Vacation / Bonus Pay During Employment

MAGI	Non-MAGI	LTC	SNAP	AF	CW
Countable	Countable	Countable	Countable	Countable	Countable

## Temporary (<90 Days) Income

MAGI	Non-MAGI	LTC	SNAP	AF	CW
Countable	Countable	Countable	Countable	Countable	Exempt

## Title 1 (Vista - University Year of Action)

MAGI	Non-MAGI	LTC	SNAP	AF	CW
Not Specified	Not Specified	Exempt When total volunteer hours are equivalent or greater than minimum wage.	Countable	Not Specified	Exempt



# Earned Income

## Title V (Older Americans Act)

MAGI	Non-MAGI	LTC	SNAP	AF	CW
Exempt	Exempt	Exempt Only benefits received under Title VII, Nutrition Program for the Elderly, of the Older Americans Act and Title V of the Housing Act of 1949.	Exempt	Countable	Exempt

## Wages, Salaries, Tips

MAGI	Non-MAGI	LTC	SNAP	AF	CW
Countable	Countable	Countable	Countable	Countable	Countable





# Earned Income

## WIOA (WIA) - Training Allowances

MAGI	Non-MAGI	LTC	SNAP	AF	CW
<b>Exempt</b> As long as the payments (exclusive of extra allowances for transportation or other costs) don't total more than the public welfare benefits they would have received otherwise.	Not Specified	Exempt	<b>Exempt</b> Unless OJT, over 19, and not under parental control of an adult HH member (CCR 4.405.2(A)(6)).	Not Specified	Countable

## WIOA (WIA) - Wages

MAGI	Non-MAGI	LTC	SNAP	AF	CW
Not Specified	Not Specified	Not Specified	<b>Exempt</b> Unless OJT, over 19, and not under parental control of an adult HH member (CCR 4.405.2(A)(6)).	Not Specified	Countable

# Unearned Income

## Adoption Subsidy (Title IV)

MAGI	Non-MAGI	LTC	SNAP	AF	CW
Exempt	Exempt	Exempt	Not Specified	Exempt Child is ineligible for AF, income is not countable to parents.	Exempt Child is excluded from AU and BU.

## Agent Orange Settlements

MAGI	Non-MAGI	LTC	SNAP	AF	CW
Exempt	Exempt	Exempt	Exempt	Not Specified	Exempt

## Alimony and Support Payments

MAGI	Non-MAGI	LTC	SNAP	AF	CW
<b>Countable</b> Alimony payments if executed before 12/31/2018.  <b>Exempt</b> Alimony payments from a divorce or legal separation executed or modified after 1/1/2019.	Countable	Countable	Countable	Countable	Countable



# Unearned Income

## Beneficiary Advisory Council (BAC)

MAGI	Non-MAGI	LTC	SNAP	AF	CW
Countable	Exempt	Exempt	Exempt	Exempt	Exempt

## Certain American Indian / Alaskan Native Payments

MAGI	Non-MAGI	LTC	SNAP	AF	CW
Exempt	Exempt	Exempt	Exempt	Not Specified	Exempt

## Child Support Arrears

MAGI	Non-MAGI	LTC	SNAP	AF	CW
Exempt	Countable	Countable	Countable	Exempt	Exempt Arrears Child Support is not counted in initial eligibility or grant calculation.

# Unearned Income

## Child Support Current

MAGI	Non-MAGI	LTC	SNAP	AF	CW
Exempt	Countable	Countable	Countable	Countable If Child Support is attributed to the AF recipient (ex. child receives child support and is eligible for HCA). Child Support for a child is not countable to other household members.	Countable For initial Needs Standard Test only. Child Support will pass through if initially eligible.

## Committees and Workgroups

MAGI	Non-MAGI	LTC	SNAP	AF	CW
Countable If Establishment Gift Card is marked 'No'.	Countable If Establishment Gift Card is marked 'No'.	Countable If Establishment Gift Card is marked 'No'.	Countable If Establishment Gift Card is marked 'No'.	Exempt Being paid by a gift card does not change whether income is countable or exempt for AF.	Exempt Being paid by a gift card does not change whether income is countable or exempt for CW.
Exempt If Establishment Gift Card is marked 'Yes'.	Exempt If Establishment Gift Card is marked 'Yes'.	Exempt If Establishment Gift Card is marked 'Yes'.	Exempt If Establishment Gift Card is marked 'Yes'.		



# Unearned Income

## Crowdfunding

MAGI	Non-MAGI	LTC	SNAP	AF	CW
<b>Exempt</b> Considered as a gift and MAGI will exempt up to current taxable amount.	<b>Countable</b>	<b>Countable</b>	<b>Exempt</b> Considered as countable liquid asset.	<b>Countable</b> If owned by the member AND money has been drawn from the account. If nothing drawn, it will be considered a liquid asset.	<b>Countable</b> If owned by the member of the AU.

## Disaster Relief Payments / FEMA

MAGI	Non-MAGI	LTC	SNAP	AF	CW
<b>Exempt</b>	<b>Exempt</b>	<b>Exempt</b>	<b>Exempt</b>	<b>Exempt</b>	<b>Exempt</b>

## Donated Work Hours (Not Volunteering)

MAGI	Non-MAGI	LTC	SNAP	AF	CW
<b>Not Specified</b>	<b>Not Specified</b>	<b>Not Specified</b>	<b>Not Specified</b>	<b>Countable</b>	<b>Countable</b>



# Unearned Income

## Earned Income Tax Credits

MAGI	Non-MAGI	LTC	SNAP	AF	CW
Exempt	Exempt	Exempt	Exempt	Exempt	Exempt

## FAMLI ( Family Medical Leave Insurance Program)

MAGI	Non-MAGI	LTC	SNAP	AF	CW
<b>Countable</b> Members can self-attest FAMLI income. If verification of FAMLI income cannot be obtained through an electronic source, a VCL will be generated.	<b>Countable</b> Members shall provide verification of FAMLI income. If verification of FAMLI income cannot be obtained through an electronic source, a VCL will be generated. FAMLI income is countable as income in the month received and any unspent amount is a countable resource the following month.	<b>Countable</b> Members shall provide verification of FAMLI income. If verification of FAMLI income cannot be obtained through an electronic source, a VCL will be generated. FAMLI income is countable as income in the month received and any unspent amount is a countable resource the following month.	<b>Countable</b> FAMLI income must be verified using standard verification procedures.	<b>Countable</b> FAMLI income must be verified using standard verification procedures.	<b>Countable</b> FAMLI income must be verified using standard verification procedures.



# Unearned Income

## Financial Aid: Educational Grants / Scholarships

MAGI	Non-MAGI	LTC	SNAP	AF	CW
<b>Countable</b> Only if earmarked for Living Expenses.  <b>Exempt</b> If earmarked for Educational Expenses.	<b>Countable</b> Only if earmarked for Living Expenses.  <b>Exempt</b> If earmarked for Educational Expenses.	Exempt	Exempt	Exempt	Exempt

## Financial Aid: Educational Loans

MAGI	Non-MAGI	LTC	SNAP	AF	CW
Exempt	Exempt	Exempt	Exempt	Exempt	Exempt

## Foster Care (Title IV)

MAGI	Non-MAGI	LTC	SNAP	AF	CW
Not Specified	Not Specified	Not Specified	Exempt - Foster children are optional in a SNAP household. If opted in, their Foster Care income will be countable.	Exempt - Foster Care income for a child is not countable to the AF Adult.	Exempt - Foster Child is excluded from AU and BU.

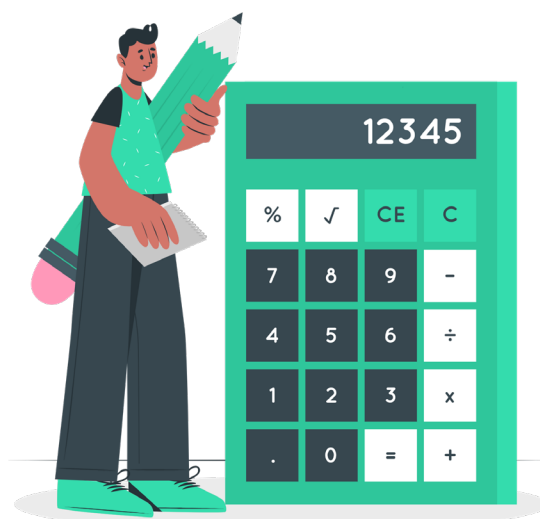
# Unearned Income

## Garnished Wages

MAGI	Non-MAGI	LTC	SNAP	AF	CW
Countable	Countable	Countable	Countable Child Support Garnishments shall be deducted prior to Gross Income Test, then used as a deduction.	Countable	Countable

## Gifts

MAGI	Non-MAGI	LTC	SNAP	AF	CW
Exempt	Countable	Countable	Countable	Countable	Countable





# Unearned Income

## Home Care Allowance - Payment Given to the Recipient (elderly disabled person)

The program provides cash assistance to individuals five (5) years of age or older with a disability to pay for a home care provider. This payment is paid directly to the member (the elderly or disabled individual) to pay for the home care provider.

MAGI	Non-MAGI	LTC	SNAP	AF	CW
<b>Exempt</b> This income should be entered under the Unearned Income screen and the income type selected is “home care allowance - Non Provider Payment”.	<b>Exempt</b> This income should be entered under the Unearned Income screen and the income type selected is “home care allowance - Non Provider Payment”.	<b>Exempt</b>	<b>Countable</b> Individuals who receive these types of HCA payments to pay another individual should not have the income counted for them. CDASS payments do count as earned income for the individual who is receiving the payment. If the disabled client is paying a member of their household, the income would count for the individual receiving the payment.	<b>Countable</b> If the applicant is the caregiver receiving the HCA income. If the applicant is receiving HCA benefit, this is not countable income towards them.	<b>Countable</b> The CW applicant cannot receive payment for both AF and CW at the same time.



# Unearned Income

## In-Kind Support Maintenance (ISM)

MAGI	Non-MAGI	LTC	SNAP	AF	CW
Not Specified	Not Specified	Not Specified	Not Specified	Countable AF only (OAP, AND- CS)	Not Specified

## In-Kind Unearned

MAGI	Non-MAGI	LTC	SNAP	AF	CW
Countable	Countable	Countable	Exempt	Countable	Countable

## Income Tax Refunds

Exempt in the month received, may be counted as a resource thereafter.

MAGI	Non-MAGI	LTC	SNAP	AF	CW
Exempt	Exempt	Exempt	Exempt	Exempt	Exempt

# Unearned Income

## Ineligible Members Income (Earned or Unearned)

MAGI	Non-MAGI	LTC	SNAP	AF	CW
Countable	Countable	Countable	Countable Mandatory but excluded Non-Qualified Non-Citizen members' income shall be prorated.	Countable	Countable The income of mandatory ineligible members is mandatory and countable.

## Inheritance

MAGI	Non-MAGI	LTC	SNAP	AF	CW
Countable Some additional information may be needed to determine in what form the inheritance was received.	Countable If the applicant is eligible for any Non-MAGI programs, then this income should be countable in the month received, and any unspent amount is counted as a resource thereafter per 8.100.5.F.5.	Countable	Countable	Countable	Countable



# Unearned Income

## Interest, Dividends

MAGI	Non-MAGI	LTC	SNAP	AF	CW
Countable	Countable	Countable	Countable	Countable	Countable

## Kinship Payments (Title IV)

MAGI	Non-MAGI	LTC	SNAP	AF	CW
Exempt	Exempt	Not Specified	<p><b>Countable</b> If the child is included in the SNAP household; treated like Foster Care.</p> <p><b>Exempt</b> If the child is not included in the SNAP household; treated like Foster Care.</p>	<p><b>Exempt</b> Kinship income for a child is not countable to the AF Adult.</p>	<p><b>Exempt</b> Kinship Child is excluded from AU and BU.</p>

# Unearned Income

## Kinship Payments - Non-Certified Kinship Caretaker Payments

MAGI	Non-MAGI	LTC	SNAP	AF	CW
Not Specified	Not Specified	Not Specified	<p><b>Countable</b> If the child is included in the SNAP household; treated like Foster Care.</p> <p><b>Exempt</b> If the child is not included in the SNAP household; treated like Foster Care.</p>	<p><b>Exempt</b> SB 24-008 allows non-certified kinship caretakers to receive reimbursement for caring for children in their care. This payment will be considered exempt unearned income and will be entered into CBMS under the child or youth it is intended for.</p>	<p><b>Exempt</b> SB 24-008 allows non-certified kinship caretakers to receive reimbursement for caring for children in their care. This payment will be considered exempt unearned income and will be entered into CBMS under the child or youth it is intended for.</p>

## LEAP or Other Assistance Payments

MAGI	Non-MAGI	LTC	SNAP	AF	CW
Exempt	Exempt	Exempt	Exempt	Exempt	Exempt



# Unearned Income

## Life / Health Insurance Proceeds

MAGI	Non-MAGI	LTC	SNAP	AF	CW
Not Specified	Not Specified	Not Specified	Countable If reasonably anticipated. Exempt - As a lump sum if one-time payment.	Countable Over medical/burial needs.	Countable Over medical/burial needs.

## Loans

To be considered a loan, there must be some sort of repayment agreement.

MAGI	Non-MAGI	LTC	SNAP	AF	CW
Exempt	Exempt	Exempt	Exempt	Exempt	Exempt

## Lump Sum

MAGI	Non-MAGI	LTC	SNAP	AF	CW
Countable In the month received.	Countable In the month received.	Countable In the month received.	Exempt Only if non-recurring Lump Sum is marked 'Yes'.	N/A Being paid a lump sum does not change whether income is countable or exempt for AF.	N/A Being paid a lump sum does not change whether income is countable or exempt for CW.



# Unearned Income

## Maintenance of Effort (MOE)

Adult Financial MOE lump sum payments issued up to 3x/year for certain AF Aid Codes.

(Does not include State Supplemental Payments)

MAGI	Non-MAGI	LTC	SNAP	AF	CW
Exempt	Exempt	Exempt	Exempt	Exempt	Exempt

## Medicaid Advisory Committee (MAC)

MAGI	Non-MAGI	LTC	SNAP	AF	CW
Countable	Exempt	Exempt	Exempt	Exempt	Exempt



# Unearned Income

## Military Combat Payments

MAGI	Non-MAGI	LTC	SNAP	AF	CW
Not Specified	Not Specified	Not Specified	<b>Exempt</b> Military combat payments received by a member of the US Armed Forces deployed to a designated combat zone shall be excluded from HH income for the duration of the member's deployment as long as the payment was not received immediately prior to serving in a combat zone.	Not Specified	Not Specified



# Unearned Income

## Military Education Deductions While Enlisted

MAGI	Non-MAGI	LTC	SNAP	AF	CW
Not Specified	Not Specified	Not Specified	Exempt	Not Specified	Not Specified

## Military Salary / Allotment

MAGI	Non-MAGI	LTC	SNAP	AF	CW
Countable	Countable	Countable	Countable	Countable	Countable

## Mineral Rights Royalties or Lease Bonuses

MAGI	Non-MAGI	LTC	SNAP	AF	CW
Countable	Countable	Countable	Countable	Countable	Countable



# Unearned Income

## Minister Housing Stipend

MAGI	Non-MAGI	LTC	SNAP	AF	CW
Exempt	Countable	Not Specified	<p><b>Countable</b> If the employer provides monies to be used for rent/housing or garnishing/diverting employee wages to pay for housing expenses.</p> <p><b>Exempt</b> If the benefit is not in the form of money and the person is not an employee OR if the employer pays a household's rent directly to the landlord in addition to paying regular wages.</p>	Not Specified	Not Specified

# Unearned Income

## Monies Withdrawn from Trust Funds

MAGI	Non-MAGI	LTC	SNAP	AF	CW
Countable	Countable	Countable	Countable	Countable	Not Specified

## Non-Recurring Lump Sum

MAGI	Non-MAGI	LTC	SNAP	AF	CW
Countable As income in the month received. Counted as a resource following.	Countable As income in the month received. Counted as a resource following.	Countable As income in the month received. Counted as a resource following.	Exempt	Countable As income in the month received. Counted as a resource following.	Countable As income in the month received. Counted as a resource following.

## PASS Income (Plan to Achieve Self Support - SSA)

MAGI	Non-MAGI	LTC	SNAP	AF	CW
Not Specified	Not Specified	Not Specified	Not Specified	Exempt	Countable

## Pensions / Retirement Payments

MAGI	Non-MAGI	LTC	SNAP	AF	CW
Countable	Countable	Countable	Countable	Countable	Countable

# Unearned Income

## Prizes / Awards

MAGI	Non-MAGI	LTC	SNAP	AF	CW
<b>Countable</b> For the individual that won the prize and all members of the prize winner's MBU in the month the prize/award was received.	Countable	Countable	Countable	Countable	Countable

## Public Assistance Payments (CW, AF)

Including AF State Supplemental Payments for certain Aid Codes.

MAGI	Non-MAGI	LTC	SNAP	AF	CW
Exempt	Exempt	Exempt	Countable	Exempt	Exempt

## Railroad Retirement Annuities

MAGI	Non-MAGI	LTC	SNAP	AF	CW
<b>Countable</b>  <b>Exempt</b> Railroad Tier 1 for children / tax dependents are excluded when determining Pickle.	Countable  Exempt Railroad Tier 1 for children / tax dependents are excluded when determining Pickle.	Countable  Exempt Railroad Tier 1 for children / tax dependents are excluded when determining Pickle.	Countable	Countable	Countable



# Unearned Income

## Recoupments

MAGI	Non-MAGI	LTC	SNAP	AF	CW
Exempt	Exempt	Exempt	Exempt	Not Specified	Not Specified

## Reimbursements

MAGI	Non-MAGI	LTC	SNAP	AF	CW
Not Specified	Not Specified	Not Specified	Exempt Any portion of the reimbursement that exceeds the incurred expense is considered countable income.	Exempt	Exempt

## Rental - Unearned

MAGI	Non-MAGI	LTC	SNAP	AF	CW
Countable	Countable	Countable	Countable	Countable	Countable

## Reverse Mortgage

MAGI	Non-MAGI	LTC	SNAP	AF	CW
Exempt	Exempt	Exempt	Exempt	Exempt	Exempt



# Unearned Income

## Royalties / Annuities

MAGI	Non-MAGI	LTC	SNAP	AF	CW
Countable	Countable	Countable	Countable	Countable	Countable

## Sick / Vacation / Bonus Pay After Employment Ends

MAGI	Non-MAGI	LTC	SNAP	AF	CW
Countable	Countable	Countable	Countable	Countable	Countable

## Social Security Benefits (Retirement, Survivor, Disability, and Dependent

MAGI	Non-MAGI	LTC	SNAP	AF	CW
Countable	Countable	Countable	Countable	Countable	Countable

## Sponsor Income

MAGI	Non-MAGI	LTC	SNAP	AF	CW
N/A Sponsor income is requested, but not currently used for eligibility.	N/A Sponsor income is requested, but not currently used for eligibility.	N/A Sponsor income is requested, but not currently used for eligibility.	Countable	Countable Sponsor income is not required for OAP unless the sponsor is the spouse.	Countable



# Unearned Income

## Spousal Allowance for Community Spouse

MAGI	Non-MAGI	LTC	SNAP	AF	CW
Exempt	Not Specified	Countable Countable in the initial month if the Community Spouse subsequently applies for LTC.	Countable	Countable	Countable

## SSI (Supplemental Security Income)

MAGI	Non-MAGI	LTC	SNAP	AF	CW
Exempt May vary if there is a child receiving SSA benefits. Income can be excluded.	Exempt	Exempt	Countable	Countable	Exempt



# Unearned Income

## Striker Income (Union Income)

MAGI	Non-MAGI	LTC	SNAP	AF	CW
Countable	Countable	Countable	Countable Eligibility at time of application is determined by comparing the striking member's income as of the day before the strike to their current income and adding the higher of the two (2) to the current income of the non-striking household members during the month of application. The higher income will be used in determining benefits.	Not Specified	Not Specified



# Unearned Income

## Student Loan Forgiveness

MAGI	Non-MAGI	LTC	SNAP	AF	CW
<b>Countable</b> For MAGI and Marketplace Programs in the month the loan was forgiven.	Exempt	Exempt	Exempt	Exempt	Exempt

## Substantial Gambling / Lottery Winnings

MAGI	Non-MAGI	LTC	SNAP	AF	CW
<b>Countable</b> For members of the gambling/lottery winner's MBU only in the month the income was received. Counts for the individual that won the money in the month received and subsequent months (CBMS calculation).	Countable	Countable	Countable	Countable	Countable

# Unearned Income

## Income from Trusts

MAGI	Non-MAGI	LTC	SNAP	AF	CW
<b>Countable</b> Some trust income is excluded. All Trusts must be reviewed by HCPF Trust Unit.	<b>Countable</b> Some trust income is excluded. All Trusts must be reviewed by HCPF Trust Unit.	<b>Countable</b> Some trust income is excluded. All Trusts must be reviewed by HCPF Trust Unit.	<b>Countable</b>	<b>Countable</b>	<b>Not Specified</b>

## UCard (United Healthcare Benefit Card)

This is a benefit with some insurance plans that provides funds or food and other necessities.

MAGI	Non-MAGI	LTC	SNAP	AF	CW
<b>Exempt</b>	<b>Exempt</b>	<b>Exempt</b>	<b>Exempt</b>	<b>Exempt</b>	<b>Exempt</b>



# Unearned Income

## Unemployment Insurance Benefits (UIB)

MAGI	Non-MAGI	LTC	SNAP	AF	CW
Countable	Countable	Countable	Countable Beginning 01/01/2023, the new income expense type “Unemployment Adjustment” will be an allowable expense for the following unearned income types for SNAP only: FPUC, PEUC, PUA, UIB.	Countable	Countable

## Vendor Payments

MAGI	Non-MAGI	LTC	SNAP	AF	CW
Exempt	Exempt	Exempt	Exempt	Exempt	Exempt

## Veteran's Administration (VA) Benefits

MAGI	Non-MAGI	LTC	SNAP	AF	CW
Exempt	Countable	Countable	Countable	Countable	Countable



# Unearned Income

## Veteran's (VA) Aid and Attendance

MAGI	Non-MAGI	LTC	SNAP	AF	CW
Exempt	Exempt	Exempt	Countable	Exempt	Exempt

## Veteran's Educational Assistance (GI Bill)

MAGI	Non-MAGI	LTC	SNAP	AF	CW
<b>Countable</b> Only if earmarked for Living Expenses.  <b>Exempt</b> If earmarked for Educational Expenses.	<b>Countable</b> Only if earmarked for Living Expenses.  <b>Exempt</b> If earmarked for Educational Expenses.	Not Specified	<b>Countable</b> Money intended for other purposes, specifically daily living expenses, are considered countable unearned income.  <b>Exempt</b> Money received for educational assistance.	<b>Countable</b> Only for the amount that exceeds educational expenses.	<b>Countable</b> Only for the amount that exceeds educational expenses.

## Victims Compensation

MAGI	Non-MAGI	LTC	SNAP	AF	CW
Exempt	Exempt	Not Specified	Exempt	Exempt	Exempt



# Unearned Income

## Volunteer Work

MAGI	Non-MAGI	LTC	SNAP	AF	CW
Exempt	Exempt	Exempt	Exempt	Exempt May be countable depending on type of work and hours worked.	Exempt

## Workers' Compensation Payments

MAGI	Non-MAGI	LTC	SNAP	AF	CW
Exempt	Countable	Countable	Countable	Countable	Countable

