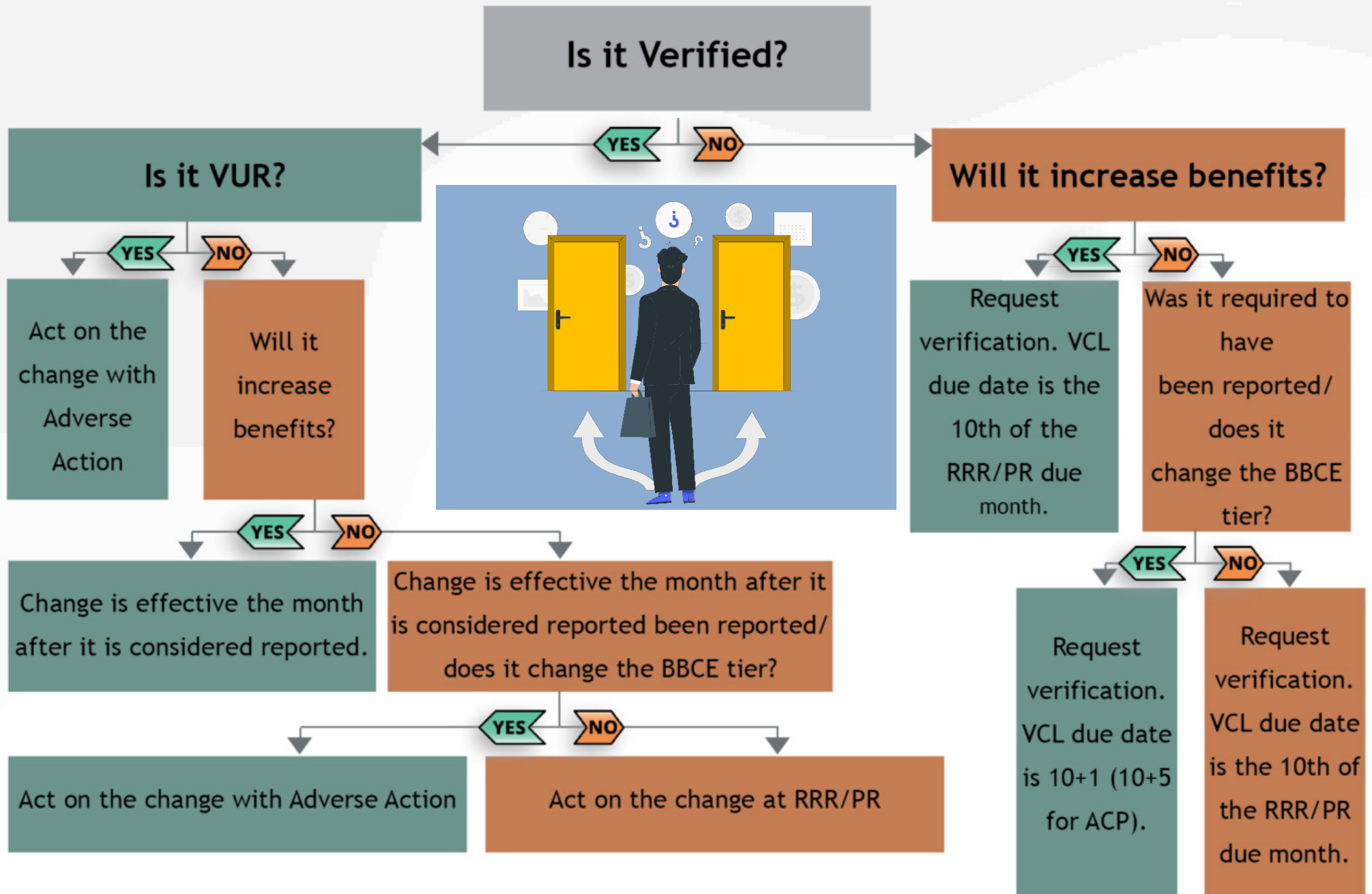
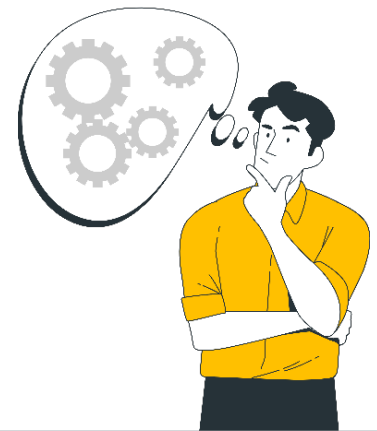


# BBCE ACTING ON MID-CERT CHANGES FLOW CHART



# BBCE ACTING ON MID-CERT CHANGES TEXT VERSION

1. Is it verified? If Yes, go to the next step. If no go to step 5.
2. Is it VUR? If Yes, Act on the change with Adverse Action. If no, go to the next step.
3. Will it increase benefits? If Yes, Change is effective the month after it is considered reported. If no, go to the next step.
4. Was it required to have been reported/does it change the BBCE tier? If Yes, Act on the change with Adverse Action. If no, act on the change at RRR/PR. Stop here.
5. Will it increase benefits? If Yes, Request verification. VCL due date is the 10th of the RRR/PR due month. If no, go to the next step.
6. Was it required to have been reported/does it change the BBCE tier? If Yes, Request verification. VCL due date is 10+1 (10+5 for ACP). If no, Request verification. VCL due date is the 10th of the RRR/PR due month.



## ACCESSIBILITY

This document is designed to comply with the Web Content Accessibility Guidelines (WCAG) 2.1 AA standard. If you experience any difficulty accessing the content or have questions regarding the process, please contact [SOC\\_StaffDevelopment@state.co.us](mailto:SOC_StaffDevelopment@state.co.us) for assistance.